

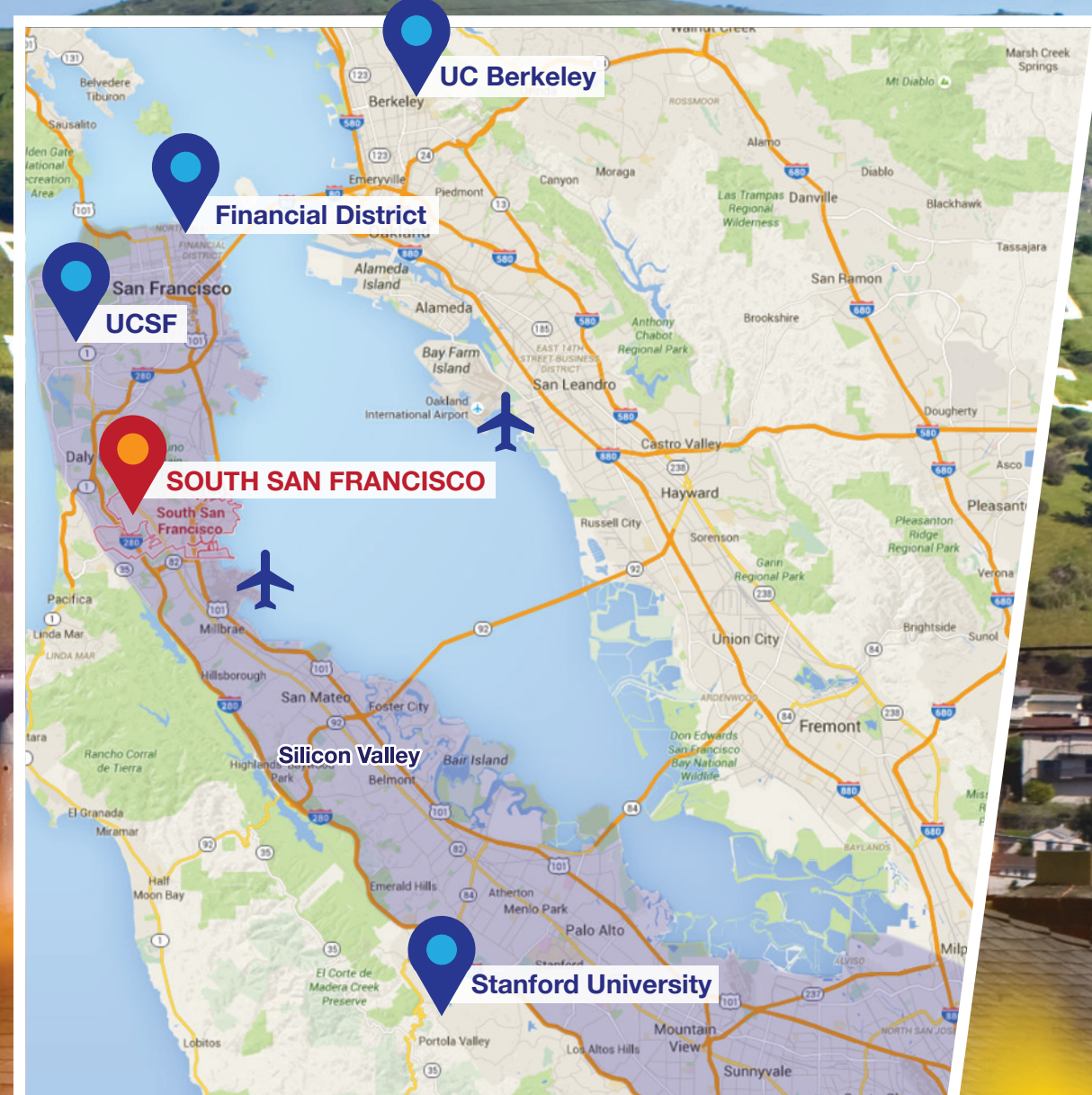
BIOTECHNOLOGY LIVES HERE

South San Francisco
THE BIRTHPLACE OF BIOTECHNOLOGY



www.ssf.net/biotech

THE MOST DYNAMIC REGION IN THE WORLD FOR BIOTECHNOLOGY

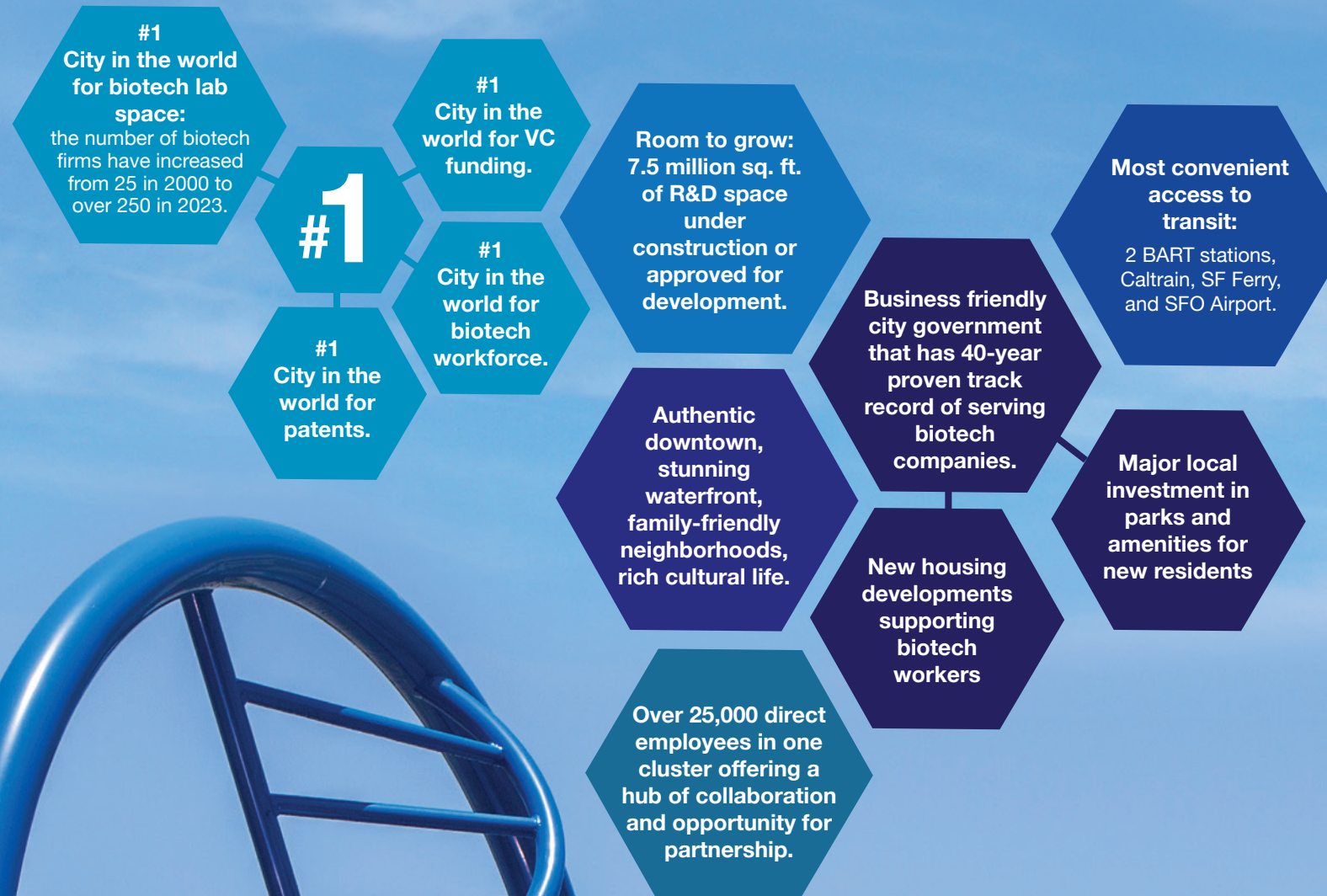


South San Francisco is the center of the most dynamic biotech & tech region in the world. Located at the crossroads of San Francisco and Silicon Valley, the City of South San Francisco offers unprecedented access to a world of opportunity:

- ▶ #1 Biotechnology workforce in the world
- ▶ Next door to San Francisco International Airport
- ▶ San Francisco Financial Hub
- ▶ Silicon Valley
- ▶ Transit-oriented cluster near CalTrain station and Ferry Terminal
- ▶ Universities– UC San Francisco, UC Berkeley, and Stanford
- ▶ Venture Capital Opportunities

THE BEST CITY FOR BIOTECHNOLOGY

South San Francisco is the largest, fastest-growing biotechnology cluster in the world - and no other city understands and serves the biotechnology industry better than we do. Our community offers the best location for your business to succeed.



MAJOR BIOTECHNOLOGY DEVELOPMENT ACTIVITY

EXISTING ANCHORS

- 23 and Me
- AbbVie
- Achaogen
- Amgen
- Astrazeneca
- Calico Life Sciences (Google)
- Denali Therapeutics
- Genentech
- Johnson & Johnson Innovation, JLABS
- Merck
- NGM Biopharmaceuticals, Inc
- Pfizer
- Sutro Biopharma
- Theravance, Inc
- Thermo Fisher Scientific

UNDER CONSTRUCTION

- Healthpeak Properties, 6 R&D buildings. Estimated completion 2024.
- South City Ventures, 213,000 Square Feet (19,788 square meters). Completion TBD.
- Kilroy Oyster Point, entitlements of up to 1.7 million square feet (157,935 square meters) Phase 2D under construction. Estimated completion 2024.
- Southline, near San Bruno BART Station—the premier transit and amenity rich campus. 3 million square feet (278,709 square meters). Phase 1 is now complete.
- Healthpeak Properties, 130,000 square feet (12,077 square meters). Estimated completion 2024.

FULLY ENTITLED / IN PLANNING

- Steelwave, a campus with two 7-story buildings and one 3-story building.
- Trammel Crow Company, a campus with an 11-story building and a 5-story building.
- Healthpeak Properties, Master Plan approval for a campus with 6 R&D buildings.
- ARE, an R&D campus with a 10-story building and an 8-story building.
- Trammell Crow Company, 296,478 square feet (27,543 square meters) of Office/R&D Space.
- Dubuque Center, an R&D campus with a 9-story building, a 5-story building, and a 10-story building.

South San Francisco
THE BIRTHPLACE OF BIOTECHNOLOGY

SOUTH SAN FRANCISCO BIOTECH CLUSTER

SOUTH SAN FRANCISCO DEVELOPMENTS



- 1 **23 and Me** | 349 Oyster Point Blvd.
- 2 **AbbVie** | 1000 Gateway Blvd.
- 3 **Achaogen** | 1 Tower Pl. #400
- 4 **Amgen** | 1120 Veterans Blvd.
- 5 **AstraZeneca** | 121 Oyster Point Blvd.
- 6 **Brittania Modular Labs** | 333 Allerton Ave.
- 7 **Calico Life Sciences (Google)** | 1170 Veterans Blvd.
- 8 **Calithera Biosciences** | 343 Oyster Point Blvd. Ste. 200
- 9 **Cytokinetics** | 350 Oyster Point Blvd.
- 10 **CytomX Therapeutics** | 151 Oyster Point Blvd. #400
- 11 **Gateway of Pacific** | 601 Gateway Blvd.
- 12 **Genentech** | 1 DNA Way
- 13 **Janssen BioPharma, Inc.** | 260 E Grand Ave.
- 14 **Johnson & Johnson Innovation, JLABS** | 329 Oyster Point Blvd. 3rd Flr
- 15 **MacroGenetics** | 1 Corporate Dr.
- 16 **Merck** | 213 E Grand Ave.
- 17 **Myokardia** | 1000 Sierra Point Pkwy.
- 18 **NGM Biopharmaceuticals, Inc.** | 333 Oyster Point Blvd.
- 19 **Pfizer** | 181 Oyster Point Blvd.
- 20 **Standard BioTools** | 2 Tower Pl. Ste. 2000
- 21 **Sutro Biopharma** | 111 Oyster Point Blvd.
- 22 **Theravance, Inc.** | 901 Gateway Blvd.
- 23 **Thermo Fisher Scientific** | 180 Oyster Point Blvd.
- 24 **USDA Animal and Plant Health Inspection** | 560 Eccles Ave.
- 25 **Vaxart, Inc.** | 170 Harbor Way Ste. 300
- 26 **Veracyte, Inc.** | 6000 Shoreline Ct. #300
- 27 **Verily Life Sciences (Google)** | 269 E Grand Ave.

no Fisher
NTIFIC
80
00



In the Heart of **BIOTECHNOLOGY**



www.ssf.net/biotech

City of South San Francisco

400 Grand Ave.

South San Francisco, CA 94080

(650) 829-6620



SSFEconomicandCommunityDevelopment



@ssfdev