



COMMUNITY UPDATES

Peninsula Clean Energy Seeks Applicants for its Volunteer Citizens' Advisory Committee *Applications due April 30*



The Peninsula Clean Energy (PCE) seeks qualified applicants for its volunteer Citizens' Advisory Committee. PCE asks that anyone wishing to apply to fill out the [application form](#) no later than April 30, 2017. An ad-hoc committee of the PCE Board of Directors will interview candidates and make a recommendation to the full Board of Directors.

Questions: [Kirsten Andrews-Schwind](#)

Detailed background and application information may be found on the PCE [website](#).

Earth Day Celebration

Friday, April 21



Please join us on Friday, April 21 to celebrate Earth Day!

Time: 11:00 a.m. to 2:00 p.m.

Location: Eucalyptus Shelter at Orange Memorial Park
(Orange Ave & Memorial Drive)

What to bring: Gardening gloves (if you have them) and wear closed-toe shoes

RSVP by April 17 to Marie Patea by [email](#) or call 650.829.3837

Free Dental Care

April 22 & 23



The California Dental Association (CDA) is offering free dental care at the San Mateo Event Center on Saturday, April 22 and Sunday, April 23, 2017.

Doors open at 5:30 a.m. Patients are seen on a first-come, first-served basis.

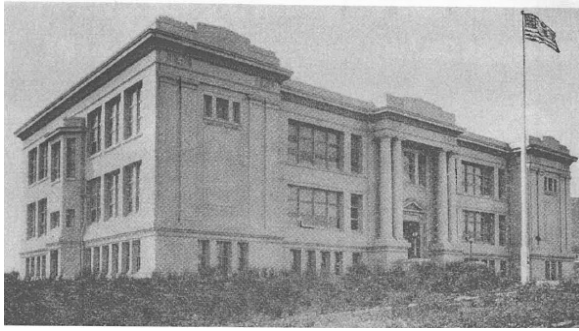
Location: San Mateo Event Center, Fiesta Hall

1346 Saratoga Drive, San Mateo, CA 94403

Click [here](#) for more information. En [Espanol](#).

SAVE THE DATE! Spruce Centennial Celebration

Saturday, April 22



Come see friends old and new as Spruce School celebrates 100 years of memories!

When: Saturday, April 22; 10:00 a.m. to 1:00 p.m.

Where: Spruce Gymnasium

Property Tax Deferments Available



If you are having difficulty with property tax payments on your home, there are options that may help you weather current challenges. The State Controller's [Property Tax Postponement Program](#) has resumed after being suspended by the Legislature in 2009. Funding is limited and is available on a first-come-first-serve basis.

The program allows homeowners who are at least 62 years old, are blind, or have a disability to defer current-year property taxes on their principal residence if they meet certain criteria, including 40 percent equity in the home and an annual household income of \$35,500 or less.

For more information, including an application form, instructions and answers to frequently asked questions, click [here](#).

SSFHas a New App!

Get connected with the City for FREE



FREE smartphone app, my SSF, give you access at the touch of a fingertip!

App highlights:

- City events and latest news

- Current job openings
- Listings of all parks and facilities
- Online library catalog
- Restaurant guide
- Links to permit center
- Citywide business directory
- Key city phone numbers
- City official and city staff bios
- Suggestion box
- Links to Engage SSF

Available on Apple iOS and Google Android

For More Events on the Horizon...

There's always something to do in South San Francisco!
Find everything on our Calendar of Events...

[*View Calendar*](#)



City of South San Francisco | (650) 877-8500 | www.ssf.net

See what's happening on our social sites:

